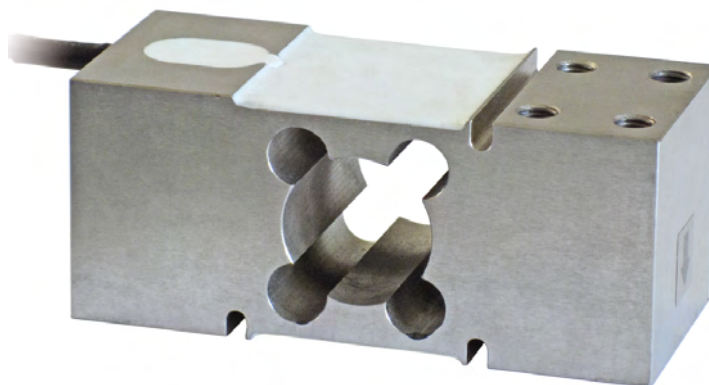




Manufactured according to OIML R60 standards

Capacity from 75 kg to 500 kg



- AISI 420 STAINLESS STEEL
- COMBINED ERROR $\leq \pm 0.02\%$
- PROTECTION CLASS IP67

CAPACITY	kg	PLATFORM (mm)	NET WEIGHT (kg)	CODE
	75	600 x 600	1.8	PEC75
	150	600 x 600	1.8	PEC150
	300	600 x 600	2	PEC300
	500	600 x 600	2	PEC500

CERTIFICATIONS

EAC Complies with the Eurasian Customs Union standards

UKCA Equivalent of the CE marking for the United Kingdom

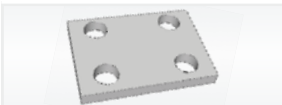
CERTIFICATIONS ON REQUEST

ATEX II 1GD (zone 0-1-2-20-21-22) (CE - UKCA)

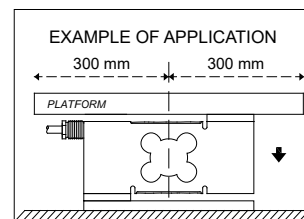
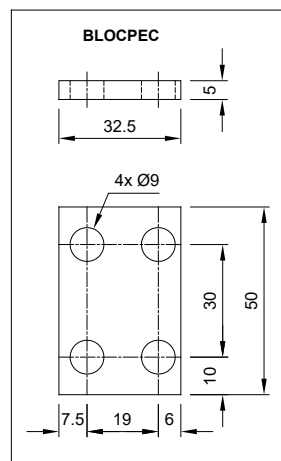
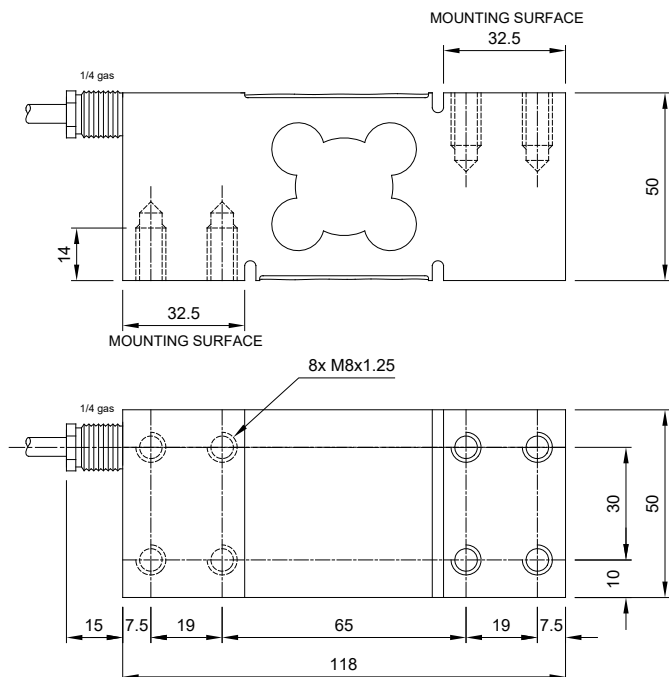
IECEx (zone 0-1-2-20-21-22)

EAC Ex Complies with the Eurasian Customs Union standards for use in potentially explosive atmospheres

COMPLEMENTARY ACCESSORIES

	DESCRIPTION	CODE
	Stainless steel drawn block.	BLOCPEC

DIMENSIONS (mm)



For the load cell fixing screws, provide the tightening torque indicated in the table

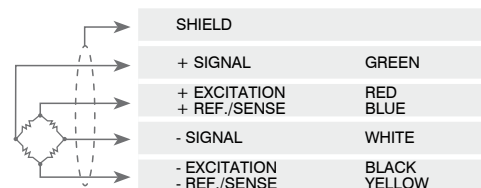
Screw	M8	
	Screw class	6.8
Tightening torque	19 Nm	25 Nm

TECHNICAL FEATURES

Material	AISI 420 stainless steel		
Nominal load (E max)	75 - 150 - 300 - 500 kg		
Combined error	≤ ±0.02%		
Protection class	IP67		
Rated output	2 mV/V ±10%	Input resistance	385 Ω ±30
Temperature effect on zero	0.002% °C	Output resistance	350 Ω ±5
Temperature effect on span	0.002% °C	Zero balance	±1%
Compensated temperature range	-10 °C / +40 °C	Insulation resistance	>5000 MΩ
Operating temperature range	-20 °C / +60 °C	Safe overload (% of full scale)	150%
Creep at nominal load in 30 minutes	0.02%	Ultimate overload (% of full scale)	300%
Max supply voltage without damage	15 V	Deflection at nominal load	0.3 mm

ELECTRICAL CONNECTIONS

Cable length	3 m
Cable diameter	5 mm
Cores	6 x 0.20 mm ²



The Company reserves the right to make changes to the technical data, drawings and images without notice.