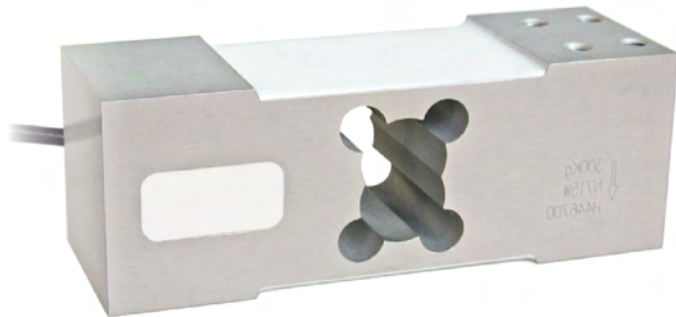




Capacity from 50 kg to 500 kg



- ALUMINUM ALLOY
- COMBINED ERROR $\leq \pm 0.02\%$ (0.017% C4)
- PROTECTION CLASS IP65

CAPACITY	kg	ACCURACY CLASS			PLATFORM (mm)	NET WEIGHT (kg)	CODE
		C3	C4				
50		•	–	•	600 x 600	1.7	APL50
100		•	–	•	600 x 600	1.7	APL100
150		•	•	•	600 x 600	1.7	APL150
200		•	•	•	600 x 600	1.7	APL200
300		•	•	•	600 x 600	1.7	APL300
500		•	•	•	600 x 600	1.7	APL500

ON REQUEST

CERTIFICATIONS

- OIML R60 C3
- Complies with the Eurasian Customs Union standards
- Equivalent of the CE marking for the United Kingdom
- Complies with United Kingdom regulations for legal for trade use

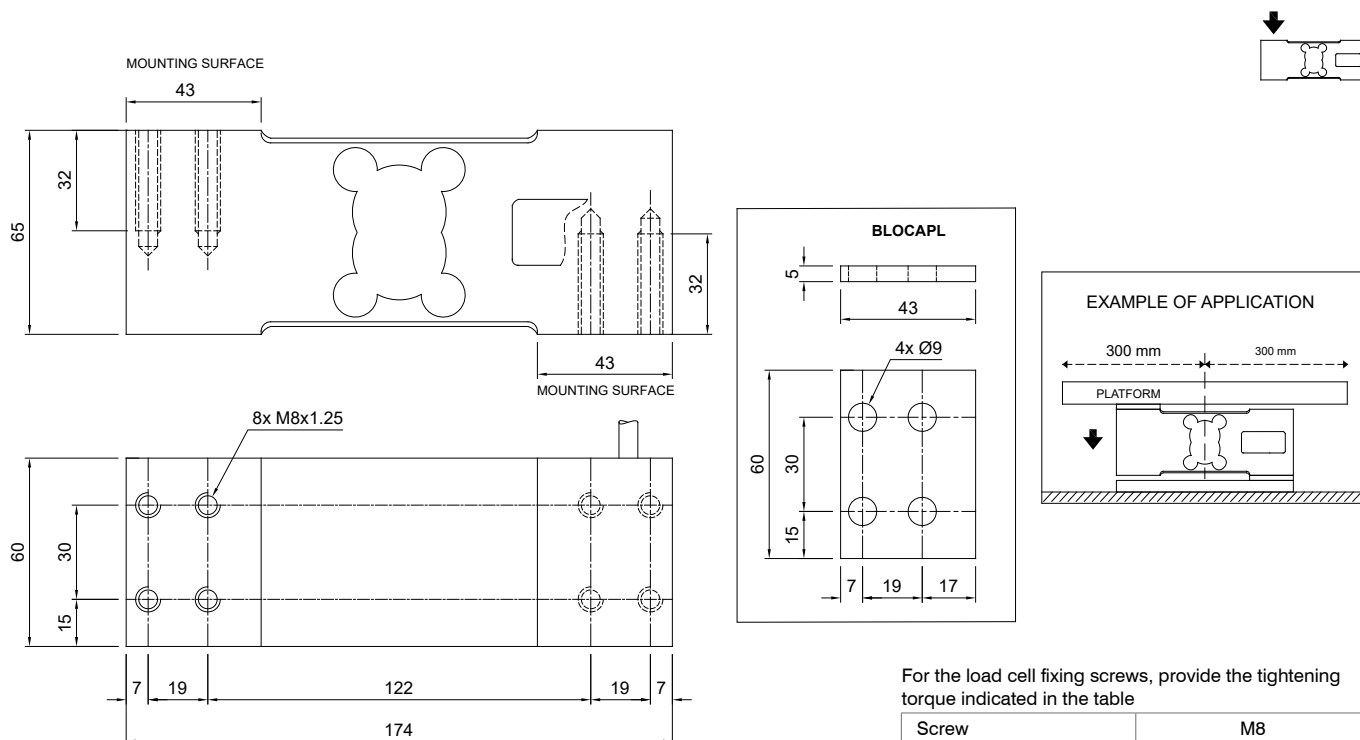
CERTIFICATIONS ON REQUEST

- ATEX II 1GD (zone 0-1-2-20-21-22) (CE - UK CA)
- IECEx (zone 0-1-2-20-21-22)
- OIML R60 C4
- Complies with the Eurasian Customs Union standards for use in potentially explosive atmospheres

COMPLEMENTARY ACCESSORIES

	DESCRIPTION	CODE
	Stainless steel and rubber waterproof kit (Ø 107x245 mm cable gland included)	IP68APLPRE
	Stainless steel drawn block.	BLOCAPL

DIMENSIONS (mm)



For the load cell fixing screws, provide the tightening torque indicated in the table

Screw	M8	
Screw class	6.8	8.8
Tightening torque	19 Nm	25 Nm

TECHNICAL FEATURES

Material	Aluminum alloy		
OIML R60 Accuracy class • Verification intervals	C3 • 3000	C4 • 4000	
Nominal load (E max)	50 - 100 - 150 - 200 - 300 - 500 kg	150 - 200 - 300 - 500 kg	
Minimum verification interval (V min)	E max / 12000	E max / 15000	
Combined error	≤ ±0.02%	≤ ±0.017%	
Protection class	IP65		
Rated output	2 mV/V ±10%	Input resistance	409 Ω ±6
Temperature effect on zero	0.0017% °C	Output resistance	350 Ω ±3
Temperature effect on span	0.0014% °C	Zero balance	≤ ±1%
Compensated temperature range	-10 °C / +40 °C	Insulation resistance	≥5000 MΩ
Operating temperature range	-35 °C / +65 °C	Safe overload (% of full scale)	150%
Creep at nominal load in 30 minutes	0.015%	Ultimate overload (% of full scale)	300%
Max supply voltage without damage	18 V	Deflection at nominal load	0.5 mm

ELECTRICAL CONNECTIONS

Cable length	3 m
Cable diameter	6 mm
Cores	6 x 0.20 mm ²

